



FOR MORE INFORMATION

about the Working With Children Check, see the *Parent and Carer information Guide*, or visit the Office of the Children's Guardian website at www.kidsguardian.nsw.gov.au/check/apply

You can also call the Working With Children Check helpline on (02) 9286 7219 or email check@kidsguardian.nsw.gov.au

CHOOSING AN ORGANISATION

to work with your child



www.kidsguardian.nsw.gov.au/safespace

PARENT & CARER FACTSHEET



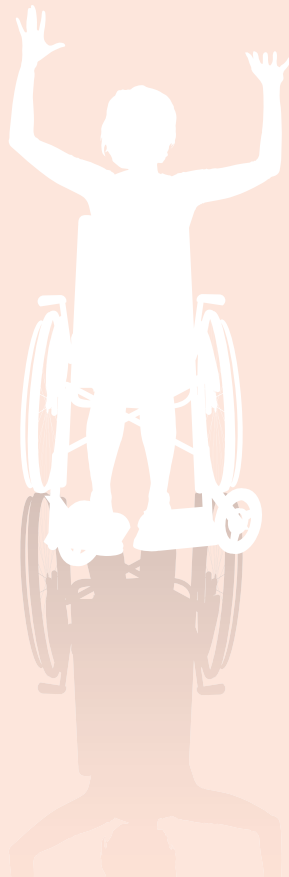
Working together to create safe environments for kids with disability

As a parent or carer you will be in control of what services your child will receive and which organisations you feel will best meet your child's needs.

You have the right to ask questions of organisations to help you decide whether they are suitable to work with your child.

There are a number of things you can look out for when choosing an organisation to work with your child.

→ Safety starts with you



THE TOP TEN SIGNS OF A CHILD SAFE ORGANISATION

1. The organisation has information on their website or other publicly-available information about how they keep children and young people safe
2. Staff and volunteers are respectful in the way they communicate with children and young people and provide information in a way that children and young people will understand
3. The organisation makes sure that every person who works or volunteers with children and young people has a valid Working With Children Check
4. The organisation gives you and your child clear and simple information about how to provide feedback or make a complaint about its services
5. The organisation gives you information about what is expected of employees and volunteers and how they should behave towards your child
6. The organisation gives you information about how it manages children and young people's behaviour
7. The organisation provides you with information about the skills and qualifications of their staff and volunteers
8. The organisation provides you with information about how staff and volunteers are supervised while they are working with your child
9. The facilities are clean, easy to access and responsible adults have clear line-of-sight to all areas where children and young people spend time
10. The organisation welcomes your questions and encourages you to talk to them about any concerns you might have